

BK

Y  
M  
C

Serial Number  
Firmware

XAGC236540  
XH01N9

Borderless  
Color Pages  
B/W Pages

0  
0

With Border  
Color Pages  
B/W Pages

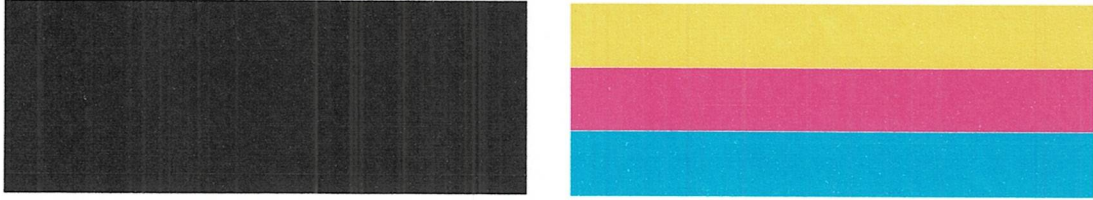
15101  
23759

Blank Pages  
Total Pages  
First Time Printing

119  
38979  
2023/04/03

TOF (Surface)

BETA BK-Y-M-C (VSD1LN4)



Vertical and Horizontal Alignment BK-Y-M-C  
VSD1(LN4)

VSD2(S)



PF Band Adjustment : BK = +1 / CL = +1

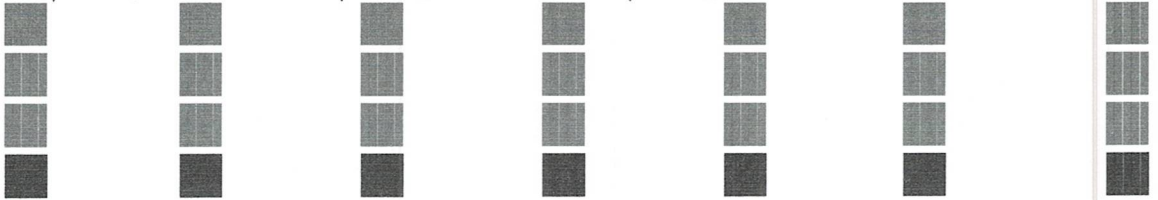


Inclined Print Head : [1>80] x 2lines + [80>1] x 2lines (Value = +3 )

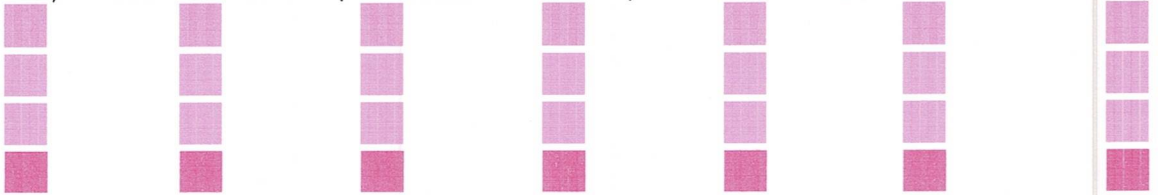


Bi-d Adjustment

BK : VSD1 = +15 / VSD2 = +10 / VSD3 = +10 / VSD4 = +19



CL : VSD1 = +15 / VSD2 = +10 / VSD3 = +10 / VSD4 = +19



AdjProg Ver.1.0.1 Date: 10-12-2024 11:48  
S/No. = XAGC236540 HEAD ID = 3818277R0U  
The dest setting is right by L3210 ROM Ver.XH01N9

TOP(PE) = +01 / 1st Dot = -02 / Bottom(PE) = +03

